



Home Accents: Lamps



Medium

Large

Small



COLLAPSIBLE SALAKOT PENDANT LAMP

Made of bamboo skin and colored handmade paper strips.

Size: (Small) Dia 38 xH 33 cm **Item Code:** PL -CSk-1
Weight: 225 grams

LCL		20' FCL	
EXWORKS	M.O.Q.	EXWORKS	M.O.Q.
\$ 29.50	33 pcs.	\$ 25.50	910 pcs.

Size: (Medium) Dia 50.80 xH 33 cm **Item Code:** PL -CSk-2
Weight: 320 grams

LCL		20' FCL	
EXWORKS	M.O.Q.	EXWORKS	M.O.Q.
\$ 40.00	20 pcs.	\$35.50	576 pcs.

Size: (Large) Dia 54.6 xH 38 cm **Item Code:** PL -CSk-3
Weight: 530 grams

LCL		20' FCL	
EXWORKS	M.O.Q.	EXWORKS	M.O.Q.
\$ 51.00	14 pcs.	\$ 44.50	324 pcs.

Home Accents: Lamps



NAKED BURI FLOOR LAMP

Made of buri sticks and Rattan vines.

Size: (Small) Dia 44x H 90 cm **Item Code:** FL BuN-1
Weight: 250 grams

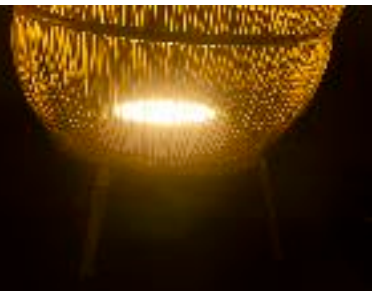
LCL		20' FCL	
EXWORKS	M.O.Q.	EXWORKS	M.O.Q.
\$ 59.85	3 pcs.	\$ 52.05	80 pcs.

Size: (Medium) Dia 45x H 90 cm **Item Code:** FL BuN-2
Weight: 150 grams

LCL		20' FCL	
EXWORKS	M.O.Q.	EXWORKS	M.O.Q.
\$ 40.00	3 pcs.	\$ 35.50	576 pcs.

Size: (Large) Dia 54.6 x H 38 cm **Item Code:** FL BuN-3
Weight: 150 grams

LCL		20' FCL	
EXWORKS	M.O.Q.	EXWORKS	M.O.Q.
\$ 51.00	14 pcs.	\$ 44.50	324 pcs.



Home Accents: Lamps



GREYWEAVE PENDANT LAMP

Its frame is made of rattan vines shaded with white and gray abaca cogon based pulp.

Size: (Medium) Dia 70 x H 50 cm **Item Code:** PL-Sal-1N
Color: White **Weight:** 600 grams

LCL		20' FCL	
EXWORKS	M.O.Q.	EXWORKS	M.O.Q.
\$ 85.00	3 pcs.	\$ 80.00	84 pcs.

Size: (Large)
Color: Grey **Item Code:** PL-Sal-1Gy
Weight: 1000 grams

LCL		20' FCL	
EXWORKS	M.O.Q.	EXWORKS	M.O.Q.
\$ 90.00	3 pcs.	\$ 85.00	84 pcs.



Home Accents: Lamps



PARAS TABLE LAMP

Its stand is made of wires woven with black Abaca and Cogon grass based handmade paper strip. In curve and straight shade.

Size: (Left) 53 x 53 x 78 cm

Weight: 2000 grams

Item Code: DL-Pr-1

LCL		20' FCL	
EXWORKS	M.O.Q.	EXWORKS	M.O.Q.
\$ 75.00	3 pcs.	\$ 70.00	80 pcs.

Size: (Right) 53 x 53 x 78 cm

Weight: 2000 grams

Item Code: DL-Pr-2

LCL		20' FCL	
EXWORKS	M.O.Q.	EXWORKS	M.O.Q.
\$ 75.00	3 pcs.	\$ 70.00	80 pcs.



Home Accents: Lamps



COLLAPSIBLE MUSHROOM PENDANT LAMP

Made of bamboo skin and coloured and natural abaca cogon based handmade paper

Size: (Left) 53 x 53 x 78 cm Weight: 2000 grams Item Code: DL-Pr-1			
LCL		20' FCL	
EXWORKS	M.O.Q.	EXWORKS	M.O.Q.
\$ 75.00	3 pcs.	\$ 70.00	80 pcs.

Size: (Right) 53 x 53 x 78 cm Weight: 2000 grams Item Code: DL-Pr-2			
LCL		20' FCL	
EXWORKS	M.O.Q.	EXWORKS	M.O.Q.
\$ 75.00	3 pcs.	\$ 70.00	80 pcs.



Home Accents: Lamps



NAKED BURI PENDANT LAMP

Made of buri sticks and rattan vines.

Size: (Left) D43.8 X H32 cm Weight: 250 grams Item Code: PL-BuN-2			
LCL		20' FCL	
EXWORKS	M.O.Q.	EXWORKS	M.O.Q.
\$ 37.00	7 pcs.	\$ 33.00	7 pcs.

Size: (Center) D30.5 X H42 cm Weight: 450 grams Item Code: PL-BuN-3			
LCL		20' FCL	
EXWORKS	M.O.Q.	EXWORKS	M.O.Q.
\$ 34.00	12 pcs.	\$ 31.00	400 pcs.

Size: (Right) D40 X H40 cm Weight: 300 grams Item Code: PL-BuN-2			
LCL		20' FCL	
EXWORKS	M.O.Q.	EXWORKS	M.O.Q.
\$ 39.00	8 pcs.	\$ 35.00	220 pcs.

Home Accents: Lamps



SNAKE VOTIVE COLLAPSIBLE TABLE TOP LAMP

Made of natural and colored handmade paper , collapsible top with bamboo rings.

Size: (Small) D11 x H23 cm

Weight: 55 grams

Item Code: TT-VSCt-BN1

LCL

EXWORKS

M.O.Q.

\$ 7.75

2,400 pcs.

Size: (Medium) D13 x H33 cm

Weight: 65 grams

Item Code: TT-VSCt-BNM1

LCL

EXWORKS

M.O.Q.

\$ 9.75

1,200 pcs.

Size: (Large) D15 x H43 cm

Weight: 75 grams

Item Code: T-VSCt-BNL1

LCL

EXWORKS

M.O.Q.

\$ 15.75

600 pcs.

Home Accents: Lamps



TABLE TOP: NAKED BAGOBO

Made of Bamboo skin and paper twine knots as design.

Size: Dia 19 x H 21.50 cm
Weight: 70 grams
Item Code: TT-VB-1

LCL		20' FCL	
EXWORKS	M.O.Q.	EXWORKS	M.O.Q.
\$ 8.84	37 pcs.	\$ 7.69	980 pcs.

Size: Dia19x H 26.70 cm
Weight: 90 grams
Item Code: TT-VB-2

LCL		20' FCL	
EXWORKS	M.O.Q.	EXWORKS	M.O.Q.
\$ 7.52	32 pcs.	\$ 6.54	840 pcs.

Size: Dia19x H 35.60 cm
Weight: 110 grams
Item Code: TT-VB-3

LCL		20' FCL	
EXWORKS	M.O.Q.	EXWORKS	M.O.Q.
\$ 6.65	26 pcs.	\$ 5.79	700 pcs.



Home Accents: Lamps



BAMBOO TABLE TOP

Made of Bamboo skin and paper twine knots as design.

Size: Dia 26 x H42 cm

Weight: 125 grams

Item Code: TT-FC-1

LCL		20' FCL	
EXWORKS	M.O.Q.	EXWORKS	M.O.Q.
\$ 1.50	12 pcs.	\$ 1.25	720 pcs.

Home Accents: Lamps



VOTIVE SNAKE

Made of colored abaca cogon based handmade paper

Size: (Small) Dia 14 x H 14 cm **Item Code:** TT -CSn-1
Weight: 50 grams

LCL		20' FCL	
EXWORKS	M.O.Q.	EXWORKS	M.O.Q.
\$ 4.50	300 pcs.	\$ 4.00	40,000 pcs.

Size: (Medium) Dia 15 x H 18 cm **Item Code:** TT -CSn-2
Weight: 55 grams

LCL		20' FCL	
EXWORKS	M.O.Q.	EXWORKS	M.O.Q.
\$ 6.75	200 pcs.	\$ 6.25	40,000 pcs.

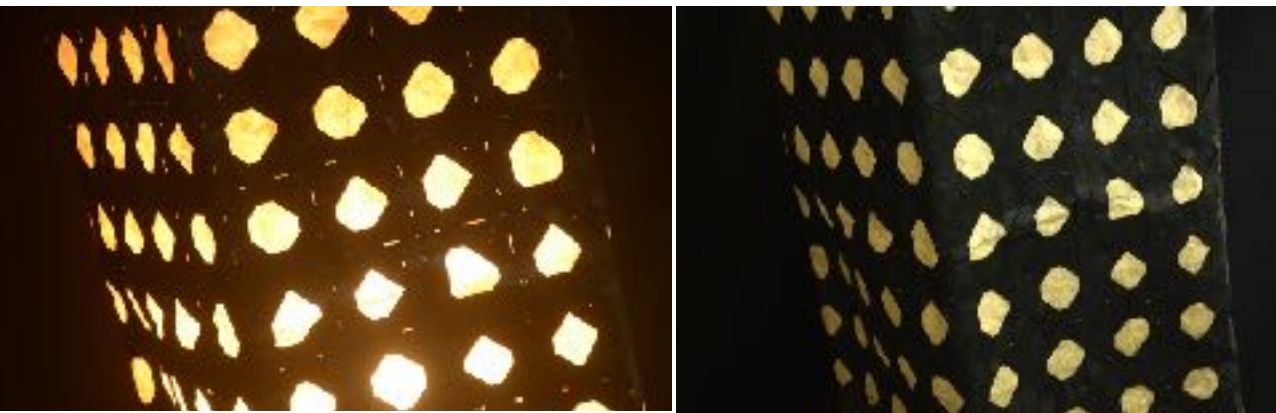
Size: (Large) Dia 17 x H 22 cm **Item Code:** TT -CSn-3
Weight: 60 grams

LCL		20' FCL	
EXWORKS	M.O.Q.	EXWORKS	M.O.Q.
\$ 8.75	200 pcs.	\$ 8.00	32,000 pcs.

Size: Small, Medium, Large **Item Code:** TT -CSn-S3
Weight: 165 grams

LCL		20' FCL	
EXWORKS	M.O.Q.	EXWORKS	M.O.Q.
\$ 18.00	500 sets of 3	\$16.50	

Home Accents: Lamps



COLLAPSIBLE SOLIHIYA FLOOR LAMP:

Made of colored abaca cogon based handmade paper

Size: 38 x 25 x 148 cm

Weight: 1900 grams

Item Code: FL-Sol-1

LCL		20' FCL	
EXWORKS	M.O.Q.	EXWORKS	M.O.Q.
\$ 70.00	3 pcs.	\$ 65.00	75 pcs.

Home Accents: Lamps



TABLE TOPBELL

Made of colored abaca cogon based handmade paper

Size: (Small) Dia 20 x H 27 cm **Item Code:** TT-BI-1
Weight: 75 grams

LCL		20' FCL	
EXWORKS	M.O.Q.	EXWORKS	M.O.Q.
\$ 8.75	37 pcs.	\$ 7.50	980 pcs.

Size: (Medium) Dia 23 x H 34 cm **Item Code:** TT-BI-2
Weight: 100 grams

LCL		20' FCL	
EXWORKS	M.O.Q.	EXWORKS	M.O.Q.
\$ 9.80	32 pcs.	\$ 8.50	840 pcs.

Size: (Large) Dia 26 x H 42 cm **Item Code:** TT-BI-3
Weight: 120 grams

LCL		20' FCL	
EXWORKS	M.O.Q.	EXWORKS	M.O.Q.
\$ 11.50	26 pcs.	\$ 10.00	700 pcs.

Size: (Large) Dia 26 x H 42 cm **Item Code:** TT-BI-S3
Weight: 295 grams

LCL		20' FCL	
EXWORKS	M.O.Q.	EXWORKS	M.O.Q.
\$ 28.50	26 sets of 3	\$ 27.25	700 sets of 3

Home Accents: Lamps



COLLAPSIBLE MACRAME BELL

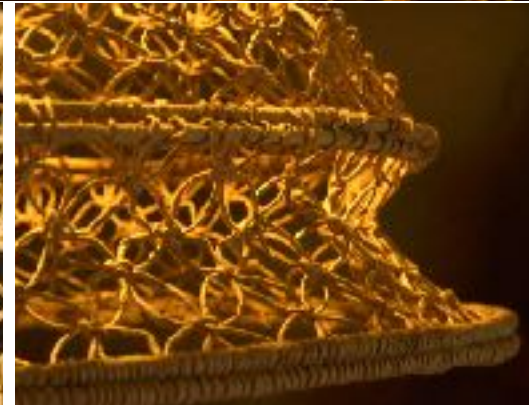
Natural paper twines are intricately woven using macrame art, creating unique designs such as Wild wasp, Coral and Seashells.

Size: (DIA 56 H 74 cm)

Weight: 650 grams

Item Code: FC-MCB

LCL		20' FCL	
EXWORKS	M.O.Q.	EXWORKS	M.O.Q.
\$ 8.75	37 pcs.	\$ 7.50	980 pcs.



Home Accents: Lamps



BURI HANG LAMP IN NATURAL

Natural paper twines are intricately woven using macrame art, creating unique designs such as Wild wasp, Coral and Seashells.

Size: D40 X H90 cm

Weight: 575 grams

Item Code: PL-BuN-A1

LCL		20' FCL	
EXWORKS	M.O.Q.	EXWORKS	M.O.Q.
\$45.00	5 pcs.	\$ 42.50	150 pcs.

